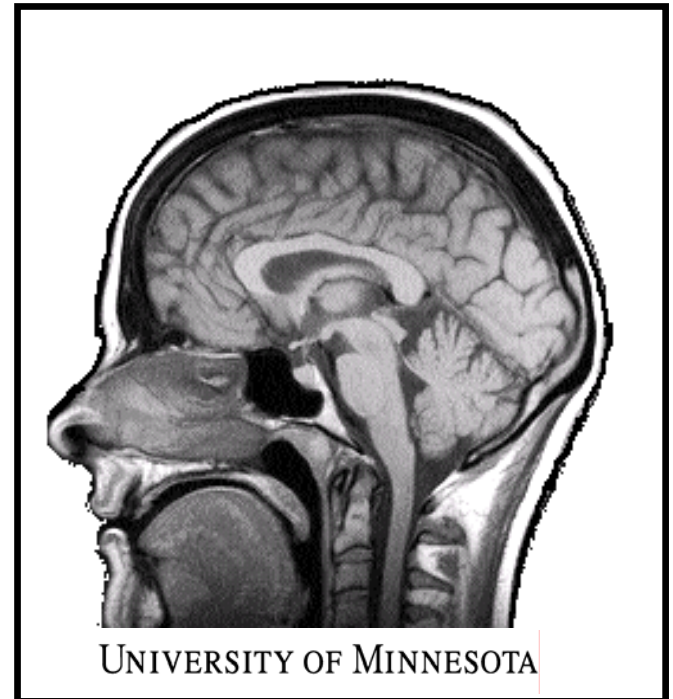


Volunteers Needed: Marijuana and Psychosis Study

Study Line:
612-273-9924
kruge083@umn.edu

Department of Psychiatry
Fairview-University Medical Center
F282/2A West Building
2450 Riverside Avenue
Minneapolis, MN 55454-1495



Study Purpose:

This study aims to answer multiple questions:

- How do brain scans of healthy control subjects differ from those of patients with psychosis?
- Do changes in the brain occur over time?
- Are there brain differences in adolescents who use/do not use marijuana?
- What kinds of changes occur in the ability to think clearly?

You May Be Eligible To Participate If You Are:

- Between the ages of 8 and 21
- Have been diagnosed with psychosis or a related illness.
-or-
- Are a healthy control subject.
- Individuals should be safe to have an MRI scan. This involves having no metal on or in the body (no dental braces, pacemaker, implanted pins/screws, etc.)

Participation Includes:

- A clinical interview
- A cognitive testing session
- MRI brain scan
- Parent and Teacher Questionnaires
- Follow-up visits at six-month intervals (2 years total).

Additional Information:

- Participation is voluntary and can be discontinued at any time
- Participants incur no cost for the procedures
- Participants will be paid for their time
- This is NOT a treatment or change of medication study